

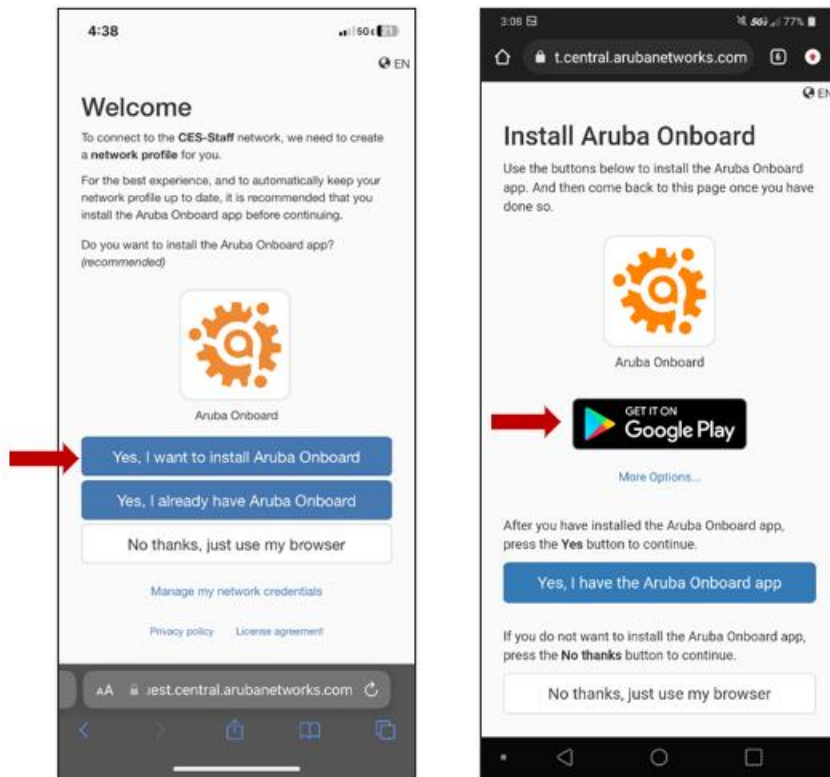
## CES-Staff WIFI Instructions – Android

1. Make sure you have disconnected from any WIFI connection and your WIFI is on.
2. From your device, open a browser and go to the following URL or use the QR Code

<https://wifi.uada.edu>

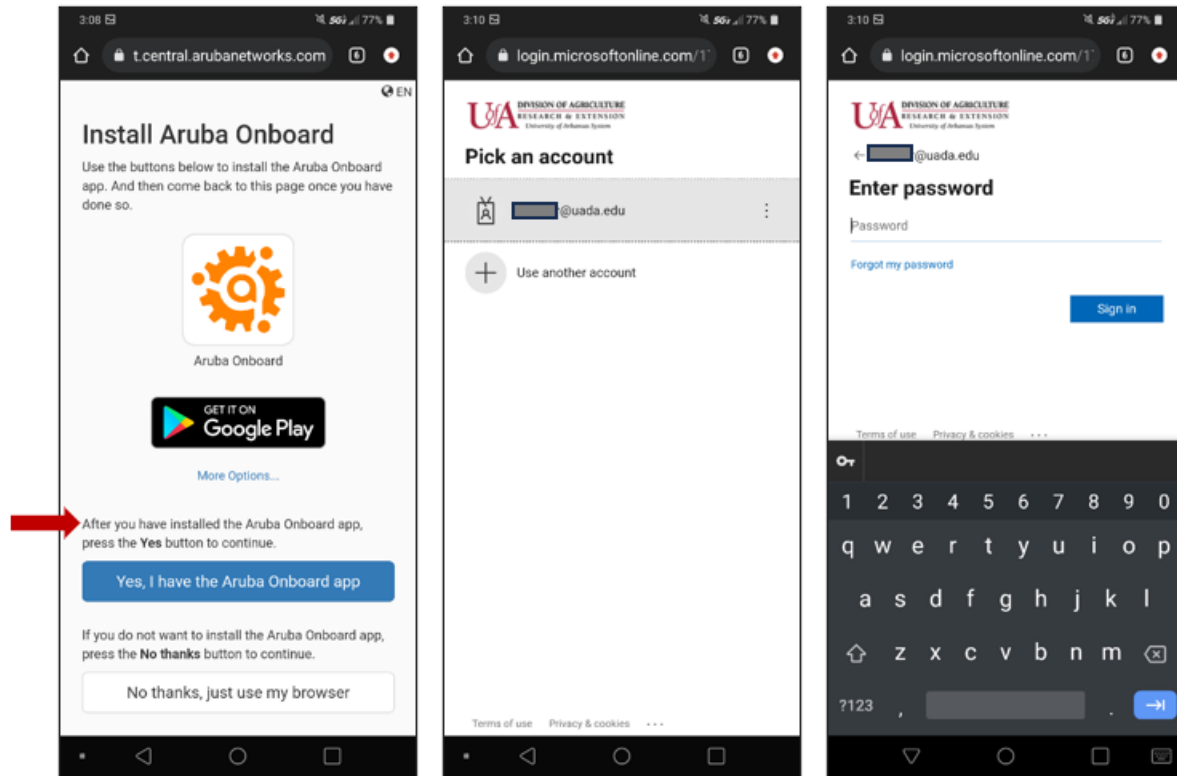


3. Choose “Yes, I want to install Aruba Onboard”  
*Note: If you choose not to install the app, you will be required to log in each time you connect to CES-Staff WIFI.*
4. Click on Google Play and download and install the Aruba Onboard app.

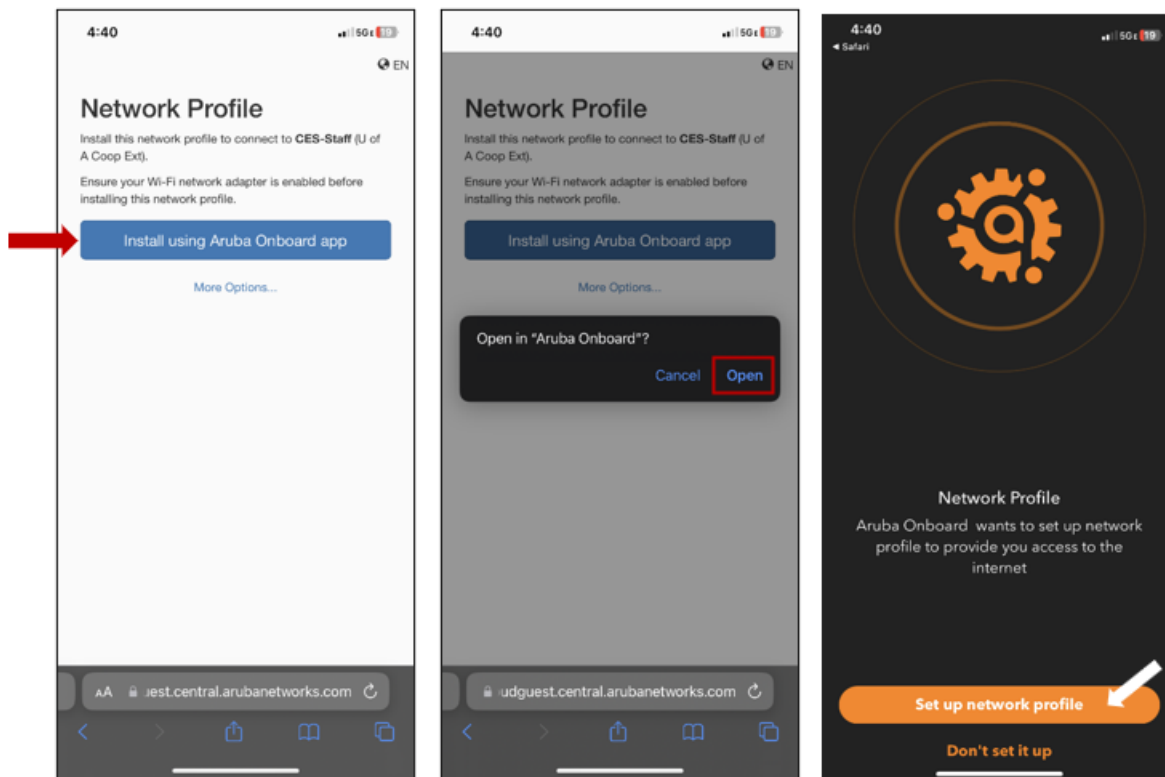


5. After installation of the app, open it.
  - a. Make sure you “Allow notifications” when asked.

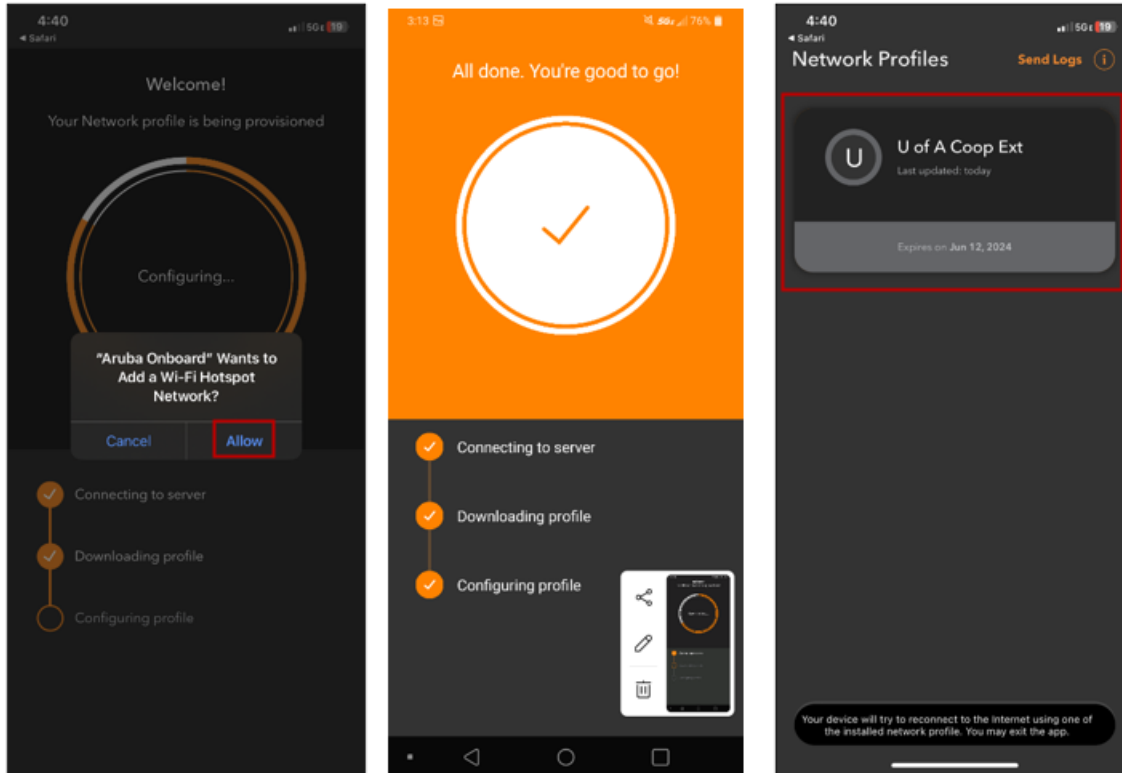
6. Go back to your browser and choose “Yes, I already have Aruba Onboard”.
7. Login using your UADA AD credentials (username@uada.edu and password).



8. You will now be asked to set up a Network Profile.
9. Choose “Install using Aruba Onboard app”.
10. Choose “Open” to Open in Aruba Onboard.
11. The Aruba Onboard app opens, choose “Set up network profile”.



12. Choose **“Allow”** when asked to add WIFI hotspot network.
13. Once your profile has been created you are done registering your device.



14. Go to your WIFI or Network Connections.
  15. CES-Staff should automatically connect. You may need to choose it from the list of available networks.
- If it doesn't connect and prompts for additional information, contact the [helpdesk](#) for assistance.